

**MAXIMUM  
PERFORMANCE,  
DEPENDABLE  
SERVICE**



# The name to trust for maintaining the quality of your grain.

## CALDWELL FANS

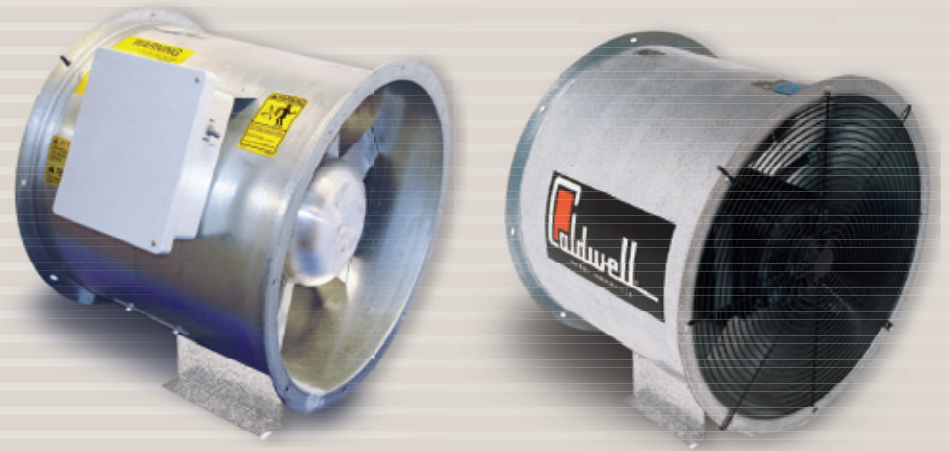
With over 45 years of manufacturing experience, Caldwell fans and heaters assure system performance, dependable service and acceptance throughout the world. Safe, reliable and attractive, Caldwell fans:

- Have galvanized housings
- High quality brand name motors
- Come in 230/460 or 380, 575 volt controls
- Are CSA approved, PAMI tested
- Meet OSHA standards

## AXIAL FANS

Caldwell axial fans range in diameters from 12" to 28" to fit most applications.

- 3450 RPM operation
- Single and 3-phase TEAO motors with horsepower from .75 to 12.5
- Heavy gauge galvanized housing built to last



## CENTRIFUGAL FANS

Designed for farm or commercial use, centrifugal fans operate quietly and allow for easy field upgrades with heaters.

- Air delivery at up to 24" Static Pressure for deep grain applications
- 1750 and 3450 RPM
- Wheels from 15" to 36" diameter
- Horsepower from 3 to 100
- Single or 3-phase TEFC motors, PTO units available
- 230v models are pre-wired for heaters



## IN-LINE CENTRIFUGAL FANS

Compact and quiet, Caldwell in-line centrifugal fans are ideal for medium to high static pressures and allow for easy field upgrades with low temperature heaters.

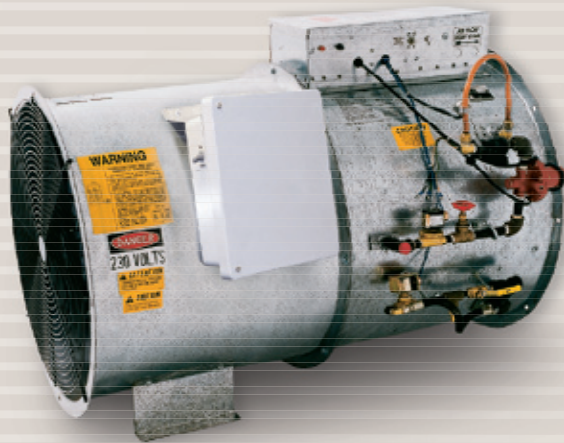
- Heavy gauge galvanized housings from 14" to 28"
- Wheels from 10" to 20"
- Horsepower from 1 to 15
- Single or 3-phase ODP motors



## HEATERS

Caldwell heaters are designed to work in combination with axial, centrifugal or in-line fans. Fueled by natural gas, and liquid or vapor propane, Caldwell heaters are available in upstream and downstream models.

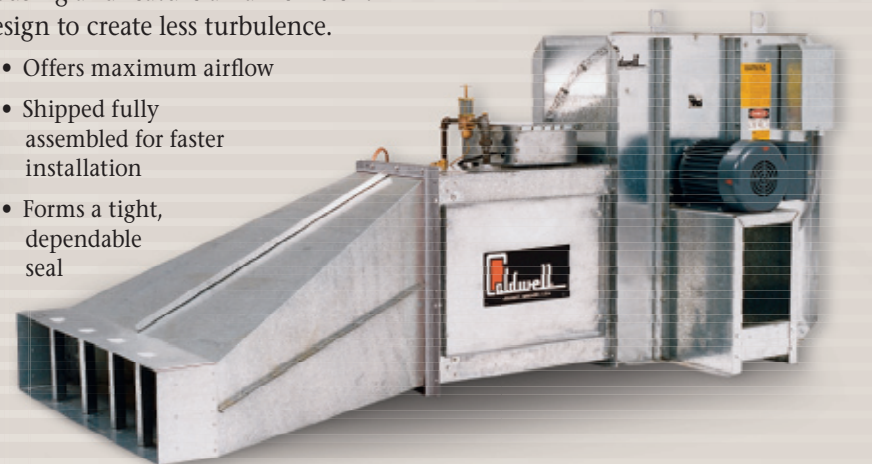
- Easy access service door and control box
- Heavy gauge galvanized housings built to last
- High and low temperature configurations
- Nine models of electric humidity controllers



## TRANSITIONS

Caldwell transitions have a galvanized housing and feature an air-efficient design to create less turbulence.

- Offers maximum airflow
- Shipped fully assembled for faster installation
- Forms a tight, dependable seal



## VENTS

Caldwell offers the industry's most complete exhaust line. All vents install easily and are designed to minimize build-up of ice and foreign materials.



3800 CFM mushroom bin vent is 42.8% larger than standard hooded vents.



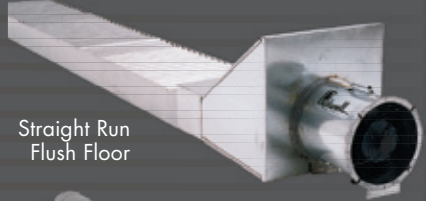
## ROOF EXHAUSTERS



½ & 2 hp exhausters available

## DUCTS

Caldwell offers a wide variety of grain conditioning ducts for commercial and farm use, including custom designs. Caldwell provides aeration installation layouts.



Straight Run  
Flush Floor



Spiral  
Corrugated Duct



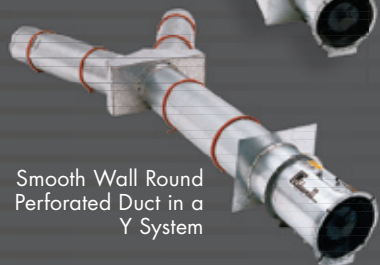
Smooth Wall Round  
Perforated Duct in a  
Straight Run



Annular  
Corrugated Duct



Flush Floor Y System



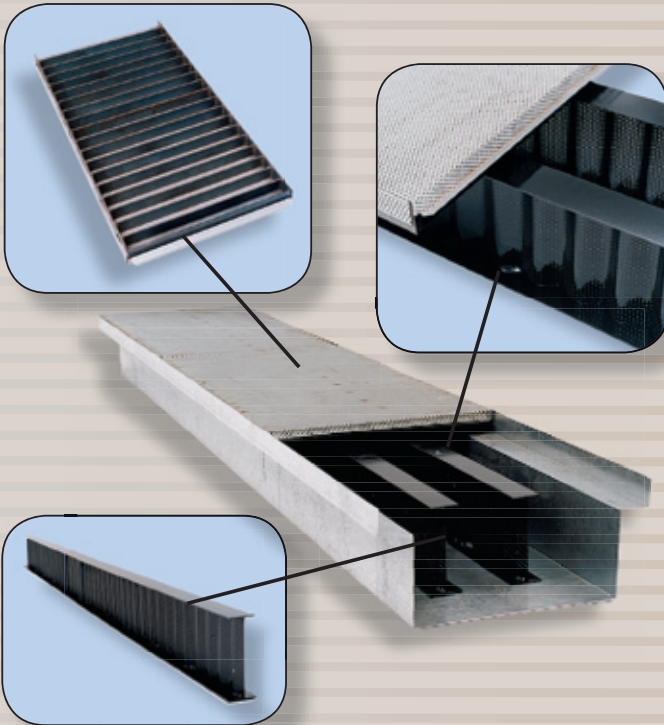
Smooth Wall Round  
Perforated Duct in a  
Y System

## CALDWELL FLUSH FLOOR SYSTEMS

Caldwell Flush Floor Systems are custom designed for each specific application. Choose a panel grate system, corrugated sheeting system or channellock plank system in the configuration that fits your needs. Available in a variety of sizes up to 6' wide, systems are perforated for unrestricted air flow.

Caldwell can also design a custom fit to ensure proper air flow. Panel grates are available with internal I-beams (which incorporate a perforated web) for heavier loads. Flush floor systems are manufactured with modular components for ease of installation.

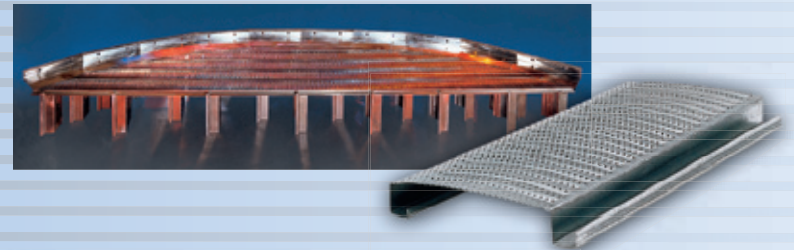
Bottom view of panel grate



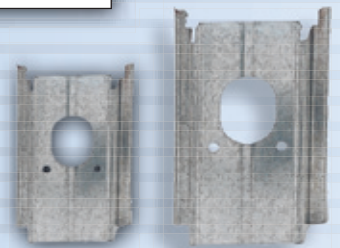
## FULL FLOOR SYSTEMS

Caldwell channellock floor systems are manufactured to help maintain the optimum quality of your grain. All channellock floor planks are of galvanized steel and are manufactured to exacting specifications to insure proper fit, structural integrity, and proper airflow.

Floor systems are available in two different perforation sizes (0.094" or 0.050") to meet the drying and conditioning requirements for your specific commodity. With the option of 20 gauge or 18 gauge material in the 0.094" perforated floor planks, Caldwell floors are engineered to handle grain depths of up to 90 ft.



Floor supports are available in either airframe (above) or channellock supports (right) to be used with both 13" & 17" floor applications. Channellock supports are available in 16 or 18 gauge galvanized material.



*Chief Agri/Industrial is a division of Chief Industries, Inc. Established in 1954, Chief Industries, Inc. is a diversified organization providing a balanced range of products and services through its many divisions and subsidiaries.*

*Ask your Chief Agri/Industrial dealer for details.*